



LAN FANG

SERIES PRODUCTS

蓝房系列产品





为人类健康呼吸 做中国绿色建材

For human healthy breathing, contribution to the green building materials

CONTENTS 目录



公司简介 Company Profile 01/02
荣誉资质 Honor And Qualification 03
产品分类 Product Category 04
打包箱房屋 Flat Packed House 05/06/07/08
折叠箱 Folding Container 09/10
集装箱房屋 Container House 11/12
轻钢结构房屋 Light Steel Structure Housing 13/14
项目案例 Project Cases 15/16/17/18/19
蓝圈风采 Lanquan Graceful Bearing 20

About Us

关于我们



江苏蓝圈新材料股份有限公司

Jiangsu Lanquan New Material Inc., LTD

公司简介

Company Profile

江苏蓝圈新材料股份有限公司成立于 2012 年，是一家集科工贸于一体的综合性高科技企业，注册资金 3080 万元，并于 2017 年 08 月 15 日新三板挂牌成功。（股票代码：871830）。

Jiangsu Lanquan New Material Inc., LTD is a comprehensive high-tech enterprise integrating science, industry and trade. It was registered capital of 30.8 million yuan and founded in 2012. It was successfully listed on August 15, 2017 (stock code: 871830).

公司主要从事新型镁质材料和低层装配式房屋、绿色砂浆、PC 预制构件三大系列产品的研发、生产和经营。新型镁质玻璃镁平板通过英国天祥（intertek）WH&ETL 认证、CE 认证、KIWA 产品追溯认证。企业被评为国家级科技型中小企业；江苏省高新技术企业；江苏省民营科技企业；江苏省质量服务诚信 AAA 级企业；ISO9001、ISO14001、OHSAS18001 三体系认证；中国菱镁协会华东新产品研发基地；中国科学院青海盐湖所科研基地；《镁质胶凝材料制品 硫氧镁平板》标准主编单位；江苏省三星上云企业；镇江市科技小巨人企业；与黑龙江大学、辽宁科技大学、山东理工大学创建博士、硕士工作站等。公司现拥有已授权发明专利 5 件，实用新型专利 5 件，注册商标 3 件。

The company is mainly engaged in the research and development, production and management according to three major series including: New magnesium materials, Prefabricated buildings, Green mortar and PC prefabricated components. The new magnesium glass magnesium plate has passed the British Intertek WH&ETL certification, CE certification, KIWA product traceability certification. The enterprise was rated as the national science and technology small and medium-sized enterprise; Jiangsu High-tech Enterprise; Private science and technology enterprises in Jiangsu Province; AAA grade enterprise of quality service integrity in Jiangsu Province; ISO9001, ISO14001 and OHSAS18001 certification; East China New product R&D Base of China Magnesite Association; Chinese Academy of Sciences, qinghai YanHuSuo scientific research base; Standard chief editor unit of Magnesium silicate products Magnesium sulfide Plate; Three-star Internet cloud office enterprise; Zhenjiang Science and Technology small giant enterprises; Establish Doctor and Master workstations with Heilongjiang University, Liaoning Science and Technology University and Shandong Science and Technology University. The company now has 5 authorized invention patents, 5 utility model patents and 3 registered trademarks.

企业秉承“为人类健康呼吸、做中国绿色建材”的使命，奉行“党建文化 + 国防文化 + 工匠文化”的特色文化，实行体系化、规范化、标准化管理，为城市的建设增添发展动力。

The enterprise adheres to the mission of "For human healthy breathing, contribution to the green building materials", pursues the characteristic culture of "Party building culture + National defense culture + Craftsman culture", implements systematic, standardized and standardized management, and adds impetus to the development of urban construction.



HONOR AND QUALIFICATION

荣誉资质



FLAT PACKED HOUSE

打包箱房屋

打包箱是一款基于钢框架和轻质墙板结构体系的模块化建筑产品。该产品由顶框、底框、角柱和 14 块可互换的墙板组成，可打包包装，便于陆地或海上运输。

Flat Packed House is a modular building product based on a steel frame and light wall panel structural system. The product consists of top frame, bottom frame, corner post and 14 interchangeable wall panels, which can be packaged and transported by land or sea.

• 安装快速 Fast Installation

平均 4 个工人 3 个小时可完成单箱安装，也可组装后整箱移动搬迁，方便快捷。

4 workers on average can complete single unit installation in 3 hours, or the whole box can be moved after assembly, which is convenient and fast.

• 组合灵活 Flexible Combination

可单箱使用，可组合成敞开式大空间，并能叠加至 3 层。

can be used in a single box, can be combined into a large open space, and can be stacked up to 3 floors.

• 安全耐用 Safety And Durability

使用寿命达 15 年以上，抗震烈度 8 度，抗风 11 级。

service life of more than 15 years, seismic intensity of 8 degrees, wind resistance level 11.

• 配套齐全 Complete Set

可搭配不同造型的屋顶、走廊、雨棚、楼梯，另外有专门的卫浴箱、厨房箱可供选择，并可根据需求对外观、内部进行装饰。

can match different models of the roof, corridor, canopy, stairs, in addition, there are special bathroom boxes, kitchen boxes to choose from, and according to the needs of the exterior, interior decoration.



一室一厅居住用套房
One Hall Suite



• 运输优势 Transportation Advantage

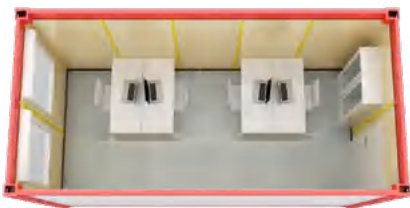
扁平化压缩后，每 4 套等同于 1 个标准 20 尺集装箱尺寸，节省 3/4 运费；1 个 40 尺高柜可装运 6 套。综合考虑目的地距离、现场安装便捷程度，可选择整箱运输，扁平化压缩运输或集装箱货柜运输。

after flattening and compression, each of 4 sets is equivalent to a standard 20-foot container size, saving 3/4 of the freight; One 40-foot container can carry 6 sets. Considering the distance to destination and the convenience of site installation, FCL transport, flat compressed transport or container transport can be selected.

打包箱可作为办公、住宿、餐厅、卫浴以及组合大空间使用，可满足建筑工地营房、野外作业营房、市政安置用房及各类商业用房的需求。目前广泛应用于国内、欧洲、日本、中东、东南亚、非洲等地区。

The flat packed house can be used as office, accommodation, dining room, bathroom and combined large space. It can meet the needs of construction site barracks, field operation barracks, municipal resettlement housing and various commercial housing. It is widely used in China, Europe, Japan, Middle East, Southeast Asia, Africa and other regions.

双人间含卫浴套房
Double Room With Bathroom



办公室单箱
Office Single Case



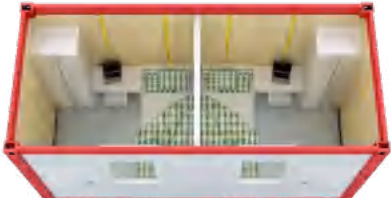
办公室双箱
Office Double Cases



办公室
Office



一室一卫套房
One Room One Bath Suite



双人间
Double Room



两室一卫套房
Two Bedrooms Suite



单人间含卫浴套房
Single Room With Bathroom



三室一厅一厨两卫居住用套房
Three Bedrooms Suite



双人间套房
Double Room Suite

FLAT PACKED HOUSE

打包箱房屋



FOLDING CONTAINER

折叠箱

折叠箱框架尺寸：宽 3* 长 6 米 * 高 2.65 米，整套框架型材为高频焊机大型设备一次性成型，所有拼接处均采用台阶咬合式设计，密封性极好，防风防漏雨。

Folding container frame size: 3* 6 m * 2.65 m. The frame profiles of the whole set are formed by high-frequency welding machine in one time. All splicing points are designed with step interlocking, featuring excellent sealing, wind and rain protection.

• 运输优势 Advantages Of Transportation

折叠后缩短体积，节省 80% 以上的运输费用，打破传统集装箱一车只能拉一套的局限性，折叠后的集装箱装车可达 7—10 套（17 米平板车可拉 20 套）。

only 42cm after folding, saving more than 80% of transportation costs, breaking the limitation of traditional containers that can only pull one set per car. After folding container loading up to 7-10 sets (17 m flat car pull 20 sets).

• 供货优势 Advantages In Supply

具备和大客户合作的优越条件，对于需求量大工期紧凑的客户，折叠集装箱恰恰符合他们的需求，折叠后的集装箱批量运输、快速抵达、快速安装。

Excellent conditions for cooperation with major customers. Folding containers meet the needs of customers with large demand and tight construction period. After folding container bulk transport, fast arrival, fast installation.

• 出口优势 Export Advantage

量身打造折叠房出口装柜尺寸，40 尺货柜可装 10 套折叠箱房、与其他箱式房出口相比更加节省运输费用和高额的人工安装费用。满足所有海关的质检条件，现场快速安装，多次反复使用，寿命 15 年以上，得到全球国际友人的认可和青睐。

Tailor-made container size of folding room for export. A 40-foot container can hold 10 folding room sets, which is more economical in transportation compared with other box-type room exports. Costs and high manual installation costs. Meet all customs quality inspection conditions, rapid installation on site, repeated use, use for more than 15 years, Get the recognition and favor of international friends all over the world.

• 根据气候差异选择多样 Diverse Selection According To The Climate Difference

墙板的厚度决定箱体保温效果，产品规格有 5 公分，7.5 公分墙板，适合不同地区气候差异需求。

The thickness of the wall panel determines the insulation effect of the box. The product specifications are 5 cm, 7.5 Cm wall panel, suitable for different climatic differences in different regions.



• 安全高效 Safe And Efficient

安装方便、快捷，前后端板上翻式设计，安装时人员均在箱体外，安全系数达到最高指标，一拉成型，快速入住，省时省力。

Easy and fast installation, up-turning design of front and rear end plates, personnel are outside the box during installation, and the safety coefficient reaches the highest index. One pull molding, quick check-in, save time and effort.

• 储存优势 Storage Advantage

传统的集装箱 18 平米只可储存 1 套，折叠后的集装箱可储存 10 套以上。

The traditional container of 18 square meters can only store one set, and the folded container can store more than 10 sets.

• 结构稳固 Stable Structure

摒弃传统工艺材料拼接焊点多所造成的误差大粗糙、变形易损、费工时等缺陷。优选汽车级镀锌钢材专业流水线设备生产，无误差，结构多面受力，高强度，节省工序，节省人工制作成本。

The defects caused by many welding joints made of traditional materials, such as large rough error, easy deformation and time consuming, should be abandoned. Professional production line equipment, no error, structure multi-surface stress, high strength, save working procedure, save labor production cost.

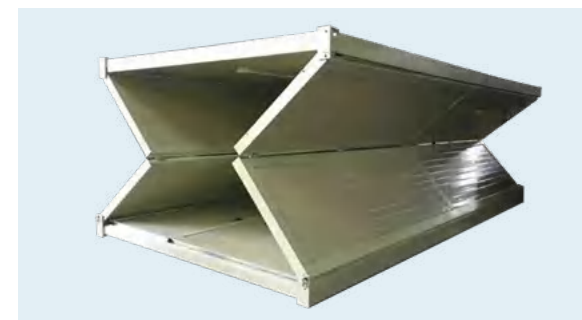
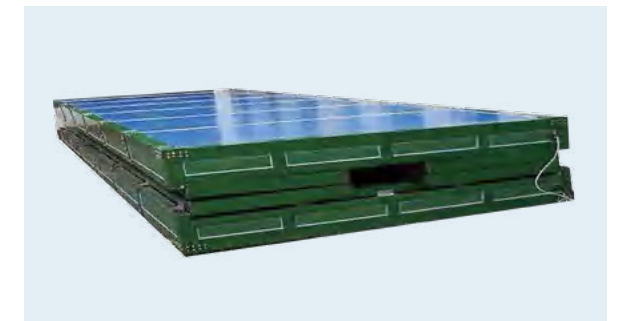
• 密封性强 Strong Sealing Performance

折叠处做到扣槽式设计无缝拼接，箱体无需打胶，即可做到防风防雨。

Seamless splicing is achieved at the folding place, and windproof and rainproof can be achieved without gluing the box body.

方便运输与储存、底座加厚，耐腐锈，结构稳固、扣槽式设计无缝拼接，箱体无需打胶，密封性能强、安全高效、型材加大加宽，敦实大气、多次折叠反复使用，寿命 15 年以上，质量好，又环保！

Advantages of folding container: convenient transportation and storage, thickening of base, corrosion resistance, stable structure, seamless splicing of button groove design, no need to glue the box body, strong sealing performance, safe and efficient, profiles increased and widened, compact atmosphere, repeated use for many times, use for more than 15 years, good quality, and environmental protection!



CONTAINER HOUSE

集装箱房屋

集装箱房屋是一种以轻钢为骨架，以夹芯板为围护材料，以标准模数系列进行空间组合，构件采用螺栓连接，可方便快捷地进行组装和拆卸的临时活动的房子。实现了临时建筑的通用标准化，树立了环保节能、快捷高效的建筑理念，使临时房屋进入了一个系列化开发、集成化生产、配套化供应、可库存和可多次周转使用的定型产品领域。

Container house is a kind of temporary house with light steel as the skeleton, sandwich plate as the envelopment material, space combination with standard module series and bolt connection of components, which can be assembled and disassembled conveniently and quickly. It has realized the general standardization of temporary buildings, set up the building concept of environmental protection, energy saving, fast and efficient, and made the temporary buildings enter into a series of development, integrated production, matching supply, stock and can be used for many times of fixed products.



- 结构利用率 100%，为环保建材。这种超轻钢结构住宅不仅具有良好的性能价格，而且具有框架结构的优越性。

Structure utilization rate of 100%, for environmental protection building materials. This kind of ultra light steel structure house not only has the good performance price, but also has the frame structure superiority.

- 超轻型钢结构住宅采用全封闭绝热和保湿系统，温度变化小，热损失低。无论冬夏，它都有一个舒适的生活环境。

The ideal adiabatic ultra-light steel structure house adopts fully closed adiabatic and moisturizing system, with small temperature change and low heat loss. Whether winter or summer, it has a comfortable living environment.

- 工厂均能实现轻钢结构住宅，完成工厂生产，在施工现场组合安装，即降低施工现场强度，提高施工效率和质量。

The factory can produce light steel structure residential buildings. The residential buildings can complete the factory production and assemble and install in the construction site, which can reduce the strength of the construction site and improve the construction efficiency and quality.

- 超轻刚结构住宅导热节能效果显著，保温性能好，节能效果突出。

The thermal conductivity and energy saving effect of ultra-light rigid structure residence are remarkable, with good thermal insulation performance and outstanding energy saving effect.

- 超轻抗震性能的轻钢结构，整体钢，强度高，重量轻，变形能力强。

Ultra light anti-seismic performance of light steel structure. the whole steel, high strength, light weight, strong deformation capacity.

- 取代传统建材，实现住宅产业工业化，改善人类生活环境。

Replace the traditional building materials, realize the industrialization of housing industry, and improve the living environment of human beings.

- 耐用性能主要结构为 1.2 毫米厚的车壳钢板。两侧均有镀锌、镀铝，防锈性好，强度高，耐久性好。

The main structure of durability is 1.2 mm thick shell steel plate. Both sides are galvanized, aluminum plating, good rust resistance, high strength, good durability.

- 以优异的隔音性能测量结果显示，在室外 80 分贝的情况下，室内只有 40 分贝。（噪音为 80 分贝，安静的办公室环境为 40 分贝）。

With excellent sound-proof performance measurement results show that, in the case of outdoor 80 dB, indoor only 40 dB. (80 decibels for noise, 40 decibels for a quiet office).

- 薄壁，空间大，改自由超轻钢结构建筑采用箱式结构承重系统，平面空间设计舒适，空间大，无梁无柱，室内整齐大方，平面布局随意，可随意增加房间数量，改变房间大小和功能。

Thin wall, large space, free ultra light steel structure building adopts box structure bearing system, the plane space design is comfortable, the space is large, no beam no column, the interior is neat and generous, the plane layout is optional, can increase the number of rooms, change the size and function of the room.



LIGHT STEEL STRUCTURE HOUSING

轻钢结构房屋

轻钢结构房屋是一种年轻而极具生命力的钢结构体系，已广泛应用于一般工农业、商业、服务性建筑，如办公楼、别墅、仓库、体育场馆、娱乐、旅游建筑和低、多层住宅建筑等领域，还可用于旧房增层、改造、加固和建材缺乏地区、运输不便地区、工期紧、活动式可拆迁建筑等，倍受业主青睐。

Light steel structure housing is a young and great vitality of steel structure system, has been widely used in industrial and agricultural, commercial, service construction, such as office buildings, villas, warehouses, sports stadiums, entertainment, tourism, construction and low, multilayer residential buildings, and other fields, can also be used in old house floors, reconstruction and reinforcement and lack of building materials, transportation inconvenience region, the tight, activity type can building demolition, favored by the owner.



- 采用高效轻型薄壁型材，自重轻、强度高、占用面积小。
High-efficient light thin-walled profiles are adopted, with light weight, high strength and small occupation area.

- 构配件均为自动化、连续化、高精度生产，产品规格系列化、定型化、配套化。各部分尺寸精确。
The structure and accessories are automated, continuous, high-precision production, product specifications serialized, stereotyped, matching. All parts are accurate in size.

- 新墙材应用范围广，大量使用采光带，通风条件好。
The new wall material has a wide range of applications, and a large number of day lighting belts are used, with good ventilation conditions.

- 便于扩大柱距和提供更大分隔空间，可降低层高和增加建筑面积（住宅实用面积可达92%）。在增层、改造、加固方面优势明显。
To facilitate the expansion of column spacing and provide greater separation space, can reduce the height and increase the floor area (the usable floor area of the residence can reach 92%). It has obvious advantages in addition, reconstruction and reinforcement.

- 室内水暖电气管线全部隐蔽在墙体中和楼层间，布置灵活，修改方便。
Indoor plumbing electrical pipelines are all hidden in the wall and between floors, with flexible layout and convenient modification.

- 结构设计、详图设计、计算机模拟安装、工厂制造、工地安装等以较小时间差同步进行。
Structural design, detail design, computer simulation installation, factory manufacturing, site installation, etc. shall be carried out synchronously with a small time difference.

- 房子可以搬迁、材料可全部回收利用，不会造成垃圾，符合可持续发展战略。
The house can be moved and all the materials can be recycled without causing garbage, which is in line with the sustainable development strategy.

- 基础以上干式工法没有湿作业，内装饰等易于一次到位。型材经过镀锌、涂层后外观优美且防腐，有利于减少维护和装修费用。
The dry work method above the foundation has no wet work, and the interior decoration is easy to be put in place once. The profile is beautiful and anti-corrosive after being galvanized and coated, which is helpful to reduce the cost of maintenance and decoration.

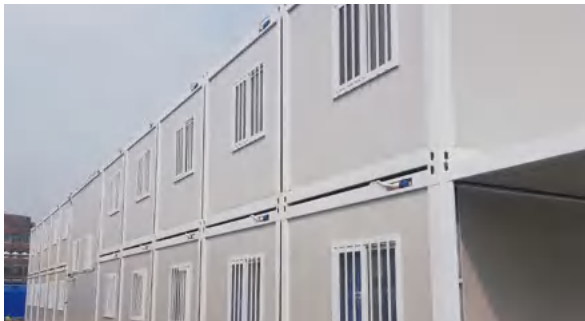


PROJECT CASES

项目案例



中铁十四局项目部
China Railway 14th Bureau Project Department



集装箱消防站
Container Fire Station



北京工程项目部
Beijing Engineering Project Department



微型消防站
Mini Fire Station



基地建设指挥部
A Base Construction Headquarters



上海建工项目部
Shanghai Construction Project Department



PROJECT CASES

项目案例

东至县花园乡生态旅居养生基地

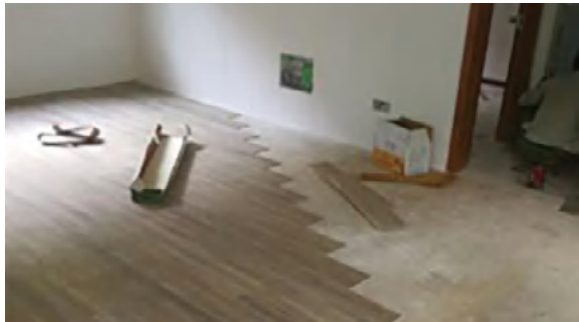
Dongzhi County Huayuan Township ecological agriculture leisure sojourn health base

所有的房屋均是装配式建筑，即预制部品部件在工地装配而成的建筑。它的楼梯采用的是江苏蓝圈新材料有限公司 PC 构件，外墙使用了蓝圈防火保温系统。

All houses are prefabricated buildings, in which prefabricated parts are assembled on site. The stair case use PC components from Jiangsu Lanquan New Materials Co., LTD., and the Outer wall uses the lanquan fireproof insulation system.



正在装修中的工地外景
Site Location



室内地板铺设
Interior Floor Laying



江心洲小林农庄一期工程

Phase I project of Jiangxinzhou Farm

农庄效果图
Rendering

项目面积：325 平米
Project area: 325 square meters



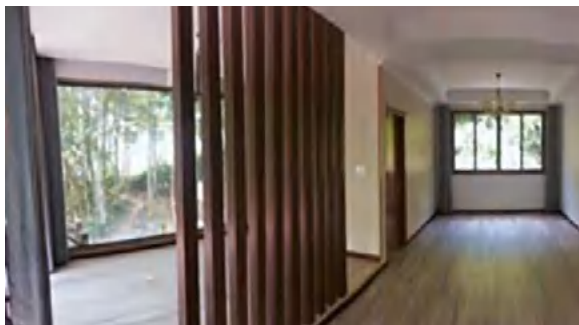
蓝圈防火生态护墙板装车运输中
Jiangsu Lanquan Fire Protection Ecological
Clapboard Loading And Transportation



一体化外墙板安装
Integrated External Wallboard Installation



外部环境实景展示
Real-Life Display Of External Environment



内部环境实景展示
Internal Environment Real - Scene Display



外墙板安装完成
Exterior Wall Panel Installation



钢结构屋架吊装
Steel Roof Truss Lifting

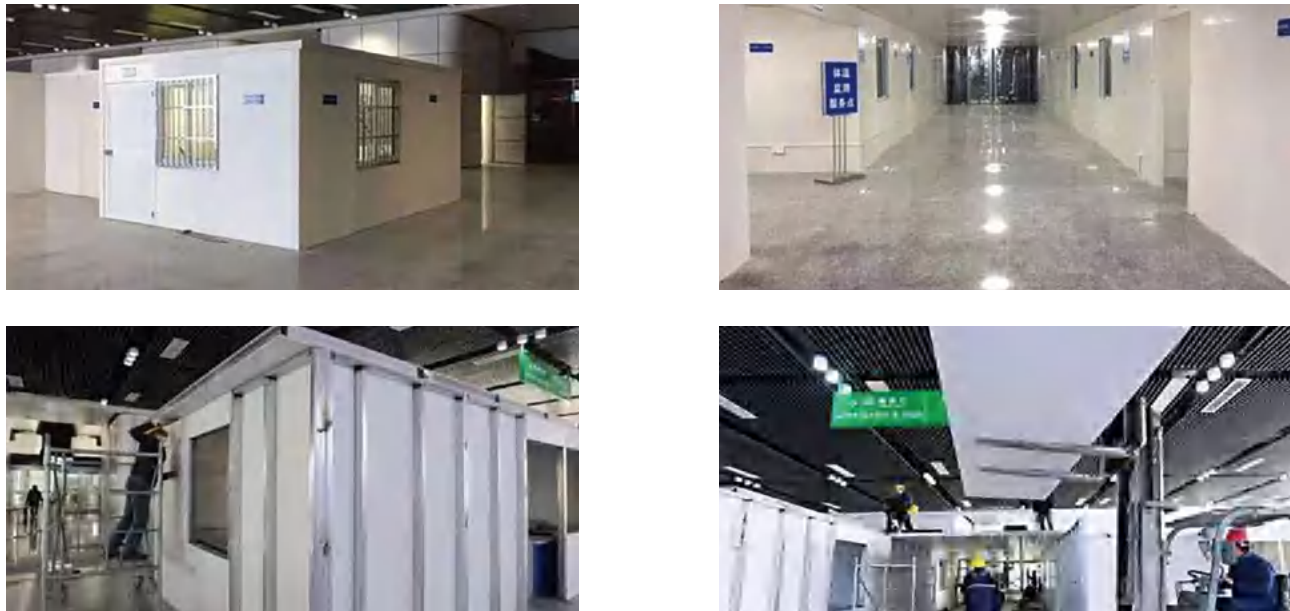
Tel : +8618205049903(Whatsapp)
WEB: www.lanquanbuild.com
Email : jane@jslanquan.com/sales@jslanquan.com

PROJECT CASES

项目案例

京沪高铁镇江南站出站口临时用房

Temporary Housing at Exit of Zhenjiang South Station of Beijing-Shanghai express railway



镇江第一人民医院新区分院门诊隔离房

Outpatient isolation room of the branch of Zhenjiang First People's Hospital



LANQUAN GRACEFUL BEARING

蓝圈风采

