

PRODUCT PRESENTATION

ARCHI FUTURE , ARTECH LIFE.



Tel : +8618205049903 (Whatsapp)
WEB: www.lanquanbuild.com
Email : jane@jslanquan.com / sales@jslanquan.com

LANFANG ARCHITECTURE





Modular L-Home

Modular your space,
Intelligentize your life.

The modular L-Home is being produced by LANFANG architecture technology which has been developed to offer a flexible, versatile and cost effective alternative to the more traditional types of modular building. L-Home Series rapidly improve construction and project timelines.

The adaptability and versatility of our system enables infinite choices from Urban housing units, hut, Motel to hotel.

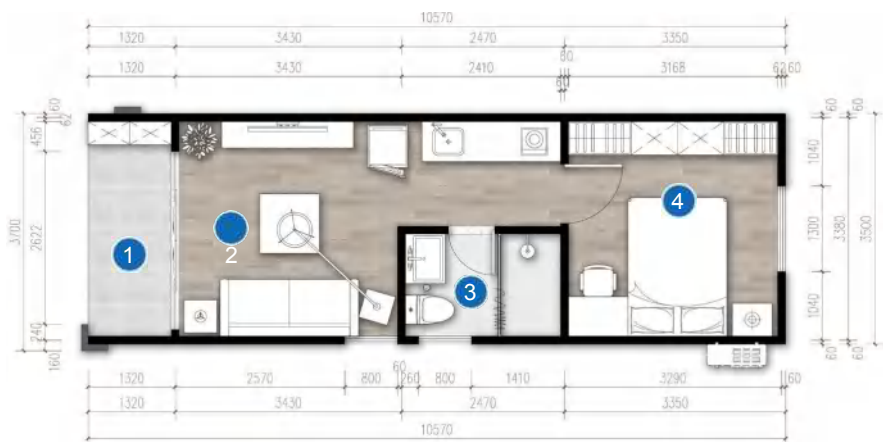
In addition to our architectural producing line, we have reputed suppliers to provide necessary facilities such as bathroom and kitchen pods with Global certified and AS/NZ standard especially.

Our goal is to revolutionise the modular building industry through smart, environmentally modernized design and innovative, newly patented manufacturing processes and products engineering.

-
- Modules types can be joint as one bedroom/ two bedrooms/ three bedrooms, flexible side by side & end by end
 - The single and double leafed external doors are available with a variety of glazing and security options
 - UPVC Double Glazed Tilt & Turn windows with integrated protective roller shutter with CE/AS/NZ standard



L-Home SR (SINGLE ROOM)



BUILT-UP AREA: 37m²

1. BALCONY: 4.1m² / 2. LIVING ROOM: 14.69m²

3. BATHROOM: 3.64 m² / 4. BEDROOM: 10.31 m²

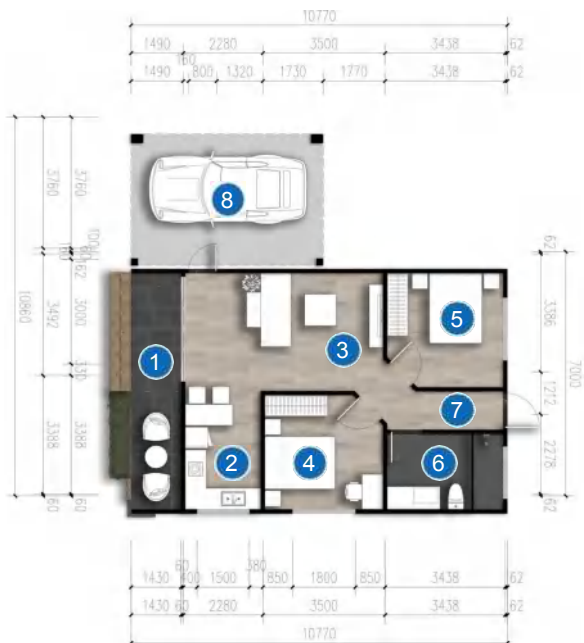
Exterior dimension : L10570*W3500*H3520mm

Interior dimension : L-Home : L10448*W3256*H2700mm





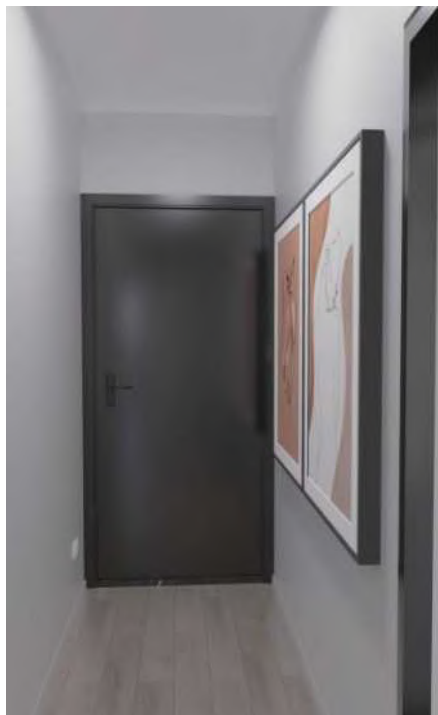
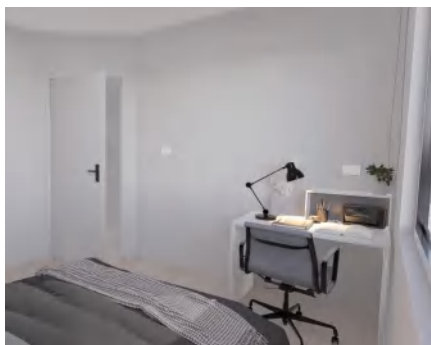
L-HOME DR (DOUBLE ROOM)



BUILT-UP AREA: 71.94 m²

1. BALCONY: 9.66m²
2. KITCHEN: 7.31m²
3. LIVING ROOM: 18.71m²
4. BEDROOM1: 10.67m²
5. BEDROOM2: 10.46m²
6. BATHROOM: 7.16m²
7. AISLE: 10.31m²
8. GARAGE: 20.68m²

Exterior dimension : L10770*W7000*H3525mm
 Interior dimension : L10648*W6756*H2700mm
 GARAGE : L10770*W10860*H3525mm



ROOF

Main frame: Galvanized steel Q345B 100mm*100mm, 4mm thickness, 7pcs; Stud: C type 50mm*100mm, Q235, 1mm

Insulation: GPS/EPS, density: 22kg/m³, 100mm thickness;

Ceiling: MGO board (10mm thickness) with Environmental paint;

Cover: Galvanizes steel sheet, 1.2mm thickness.

FLOOR

Main frame: Galvanized steel Q345B 100mm*200mm, 5mm thickness, Q345B, 6pcs; Cross member: Galvanized steel Q345B, 100mm*50mm, 3mm thickness, 25pcs

Insulation: GPS/EPS, density: 22kg/m³, 100mm thickness;

Cover: Galvanizes steel sheet, 1.2mm thickness;

Floor: 15mm thickness high density fiber cement floor;
Floor covering: 2mm thickness PVC floor (wood color or other options are available).

WINDOW

Alu. sliding window 1, 5/9/5 double tempered glass, 1500mm*1500mm;

Swing window, 5 open outward, 5/9/5 double tempered glass, 800mm*1100mm;

DOOR

Entrance door 1: Alu. sliding door 3056mm*2400mm;

Interior door 1: Plywood door 700mm*2200mm, Loo;

Interior door 2: Plywood door 900mm*2200mm; Bedroom;

TECHNICAL PARAMETER

Snow Load: 0.3 kN/m² | Wind Load: 0.69kN/m² | Floor Load: 2.0kN/m² /
Anti-seismic Grade: 4 grade | Life - time : 25 years | Sound Insulation: 40-50dB

WALL PANEL

Thickness: 122mm; Exterior: 12mm thick MGO board with green paint;

Insulation: 100mm thick GPS, density: 22kg/m³, 100mm thickness;

Interior side: 10mm thick MGO board with green paint

ELECTRICITY / WATER PIPING SYSTEM

As per clients' requests, CCC/CE/AS/CSA/ASTM are available.

SANITARY FACILITIES

Unit Bathroom or normal bathroom are available, including toilet, wash basin, shower room, water heater, etc.

Tel : +8618205049903(Whatsapp)

WEB: www.lanquanbuild.com

Email : jane@slanquan.com/sales@slanquan.com

Easy Assembly / Energy Efficiency Convenient Transportation



1.

Our modular L-Home units exceed 90% prefabricated.

2.

Easy assembly, Only 4 builders could finish one single unit within 10 hours. to save 75% overhead & labour costs.

3.

Flexible space design with intelligent housing system as your requirements.

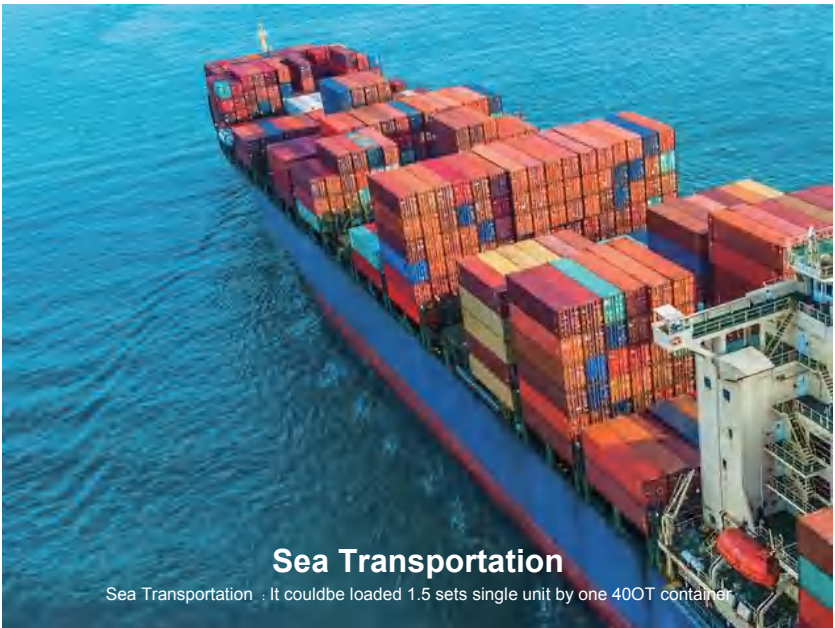
4.

Green Energy house, enviromentally & recycle.

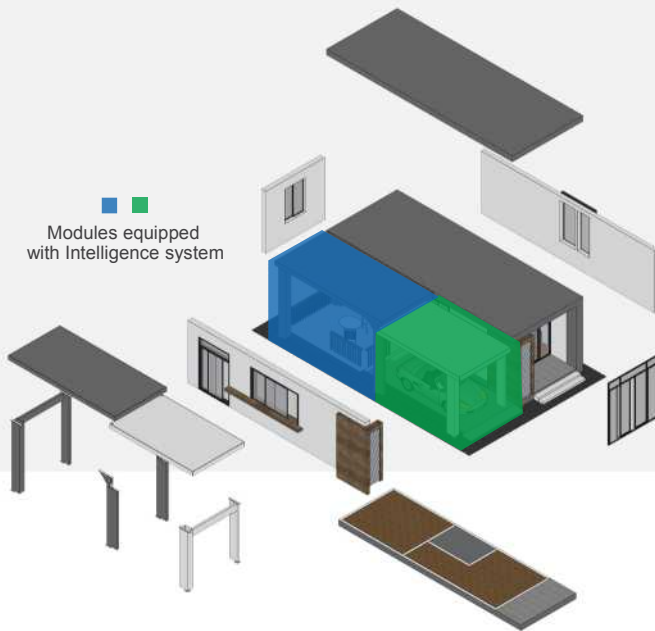
Tel : +8618205049903(Whatsapp)

WEB: www.lanquanbui.com

Email : jane@jstlanquan.com/sales@jstlanquan.com



To be ensured the land is in horizontal line ,
Solid foundation is necessary as per drawing
before the assembly process



- Step 1 : Install foot support and floor unit
- Step 2 : Install wall panels in order as per drawing provided, and Joint the panels with screws
- Step 3 : Lift and install the roof unit and fix it with fasteners.
- Step 4 : Roof water-proofing treatment, set up cover/gutters and drainage pipes. Install electrics and plumbing.

