

LAN FANG

Prefabricated House

Tel: +8618205049903 (Whatsapp)

WEB: www.lanquanbuild.com

Email:

jane@jslanquan.com / sales@jslanquan.com



为人类健康呼吸 做中国绿色建材
For human healthy breathing, contribution to the green building materials

CONTENTS

公司简介
Company Profile

荣誉资质

Honor And
Qualification

产品分类
Product Category

打包箱房屋
Flat Packed House

三合一房屋
Wing expansion house

集装箱房屋
Container House

PC预制房屋
prefabricated Structure
Housing

项目案例
Project Cases

About Us

Jiangsu Lanquan New Materials Co., Ltd. was established in 2012 and is a comprehensive high-tech enterprise integrating science, industry, and trade. Its registered capital is 30.8 million yuan and it was successfully listed on the New Third Board on August 15, 2017 (stock code: 871830).

The company mainly engages in the research and development, production, and operation of three series of products: new magnesium materials, low rise prefabricated houses, green mortar, and PC prefabricated components.

The enterprise has been awarded the honorary titles of national science and technology small and medium-sized enterprise, high-tech enterprise, "the most beautiful war sufferer" in ready mixed mortar industry, quality enterprise of Chinese magnesite industry, outstanding contribution award of Chinese magnesite industry in combating the COVID-19, private science and technology enterprise in Jiangsu Province, three-star cloud enterprise in Jiangsu Province, AAA level quality and service integrity in Jiangsu Province, small giant enterprise in science and technology in Zhenjiang City, green factory in Zhenjiang City, etc; The enterprise has passed ISO9001, ISO14001, ISO45001 three system certification, and Jiangsu Province new wall material product certification; It has been successively established as the East China New Product R&D Base of China Magnesite Association and the scientific research base of Qinghai Salt Lake Institute of the Chinese Academy of Sciences. As the first editor in chief, draft the "Magnesium based Cementitious Material Product Sulfur"

The standard for magnesium oxide flat plates has been released and implemented. We have established industry university research cooperation bases with Heilongjiang University, Liaoning University of Science and Technology, Shandong University of Technology, and others.

The enterprise adheres to the mission of "building a better life circle", adheres to the characteristic culture of "Party building culture+national defense culture+corporate culture", implements systematic, standardized, and standardized management, and adds development momentum to the construction of the city.



Honors

21 invention patents, 15 utility patents, and 4 trademark registrations



FLAT PACKED HOUSE

Flat Packed House is a modular building product based on a steel frame and light wall panel structural system. The product consists of top frame, bottom frame, corner post and 14 interchangeable wall panels, which can be packaged and transported by land or sea.

Fast Installation

4 workers on average can complete single unit installation in 3 hours, or the whole box can be moved after assembly, which is convenient and fast.

Flexible Combination

can be used in a single box, can be combined into a large open space, and can be stacked up to 3 floors.

Safety And Durability

service life of more than 15 years, seismic intensity of 8 degrees, wind resistance level 11.

Complete Set

can match different models of the roof, corridor, canopy, stairs, in addition, there are special bathroom boxes, kitchen boxes to choose from, and according to the needs of the exterior, interior decoration.



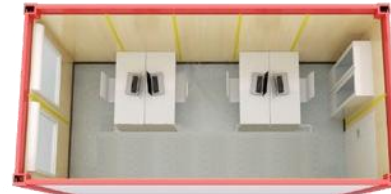
Transportation Advantage

after flattening and compression, each of 4 sets is equivalent to a standard 20-foot container size, saving 3/4 of the freight; One 40-foot container can carry 6 sets. Considering the distance to destination and the convenience of site installation, FCL transport, flat compressed transport or container transport can be selected.

The flat packed house can be used as office, accommodation, dining room, bathroom and combined large space. It can meet the needs of construction site barracks, field operation barracks, municipal resettlement, various commercial housing. It is widely used in China, Europe, Japan, Middle East, Asia, Africa and other regions.



一室一厅居住用套房
One Hall Suite



办公室单箱
Office Single Case



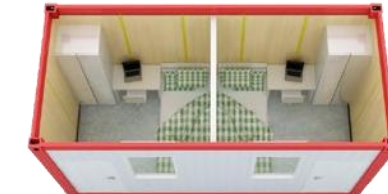
办公室双箱
Office Double Cases



办公室
Office



一室一厅套房
One Room One Bath Suite



单人间
Single Room



两室一厅套房
Two Bedrooms Suite



单人间含卫浴套房
Single Room With Bathroom



三室一厅一厨两卫居住用套房
Three Bedrooms Suite



双人间套房
Double Room Suite

FLAT PACKED HOUSE



Wing expansion house

The use of a double wing expansion structure gives it a unique appearance and spatial layout. The double wing expansion increases the available indoor space of the house, creating a larger living space that can be quickly assembled and disassembled, making it easy to relocate to different places. Whether it's outdoor exploration, camping, or emergency rescue, the double wing expansion room can



室内布局

Indoor layout



20 feet, two rooms, two living rooms



40 feet, three rooms, two living rooms

Deployment process



1



2



4



3



CONTAINER HOUSE

Container house is a kind of temporary house with light steel as the skeleton, sandwich plate as the envelopment material, space combination with standard module series and bolt connection of components, which can be assembled and disassembled conveniently and quickly. It has realized the general standardization of temporary buildings, set up the building concept of environmental protection, energy saving, fast and efficient, and made the temporary buildings enter into a series of development, integrated production, matching supply, stock and can be used for many times of fixed products.

Structure utilization rate of 100%, for environmental protection building materials. This kind of ultra light steel structure house not only has the good performance price, but also has the frame structure superiority.

The thermal conductivity and energy saving effect of ultra-light rigid structure residence are remarkable, with good thermal insulation performance and outstanding energy saving effect.

The main structure of durability is 1.2 mm thick shell steel plate. Both sides are galvanized, aluminum plating, good rust resistance, high strength, good durability.

Thin wall, large space, free ultra light steel structure building adopts box structure bearing system, the plane space design is comfortable, the space is large, no beam no column, the interior is neat and generous, the plane layout is optional, can increase the number of rooms, change the size and function of the room.

The ideal adiabatic ultra-light steel structure house adopts fully closed adiabatic and moisturizing system, with small temperature change and low heat loss. Whether winter or summer, it has a comfortable living environment.

Ultra light seismic performance of light steel structure, the whole steel, high strength, light weight, strong deformation capacity.

With excellent sound-proof performance measurement results show that, in the case of outdoor 80 dB, indoor only 40 dB. (80 decibels for noise, 40 decibels for a quiet office).

The factory can produce light steel structure residential buildings. The residential buildings can complete the factory production and assemble and install in the construction site, which can reduce the strength of the construction site and improve the construction efficiency and quality.

Replace the traditional building materials, realize the industrialization of housing industry, and improve the living environment of human beings.

Short construction period, high efficiency, not affected by the season, all pending construction.



Full assembly

Main body, foundation, decoration full assembly, dry work, assembly construction, can achieve rapid construction, effectively shorten the construction period, a large number of reduced labor, maximize the construction efficiency

coordination

Realize the standardization and modularization of design, including the standardization and modular of parts and parts, and the standardization of professional interfaces (doors and Windows, mechanical and electrical, hardcover)

integration

Main body and thermal insulation, mechanical and electrical, decoration integration

SI system

To achieve flexible space, different population, different, functional needs of the population and families to achieve variable house type

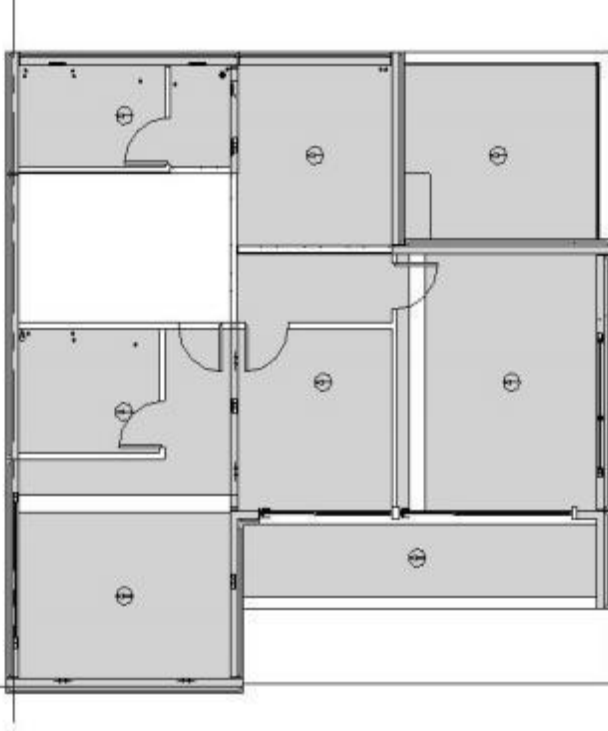
BIM

Realize the whole process of the house, can also be used as CIM (country information modeling) Interface.

modularity

Can realize the two-dimensional wall, three-dimensional building modular construction

Repertoire



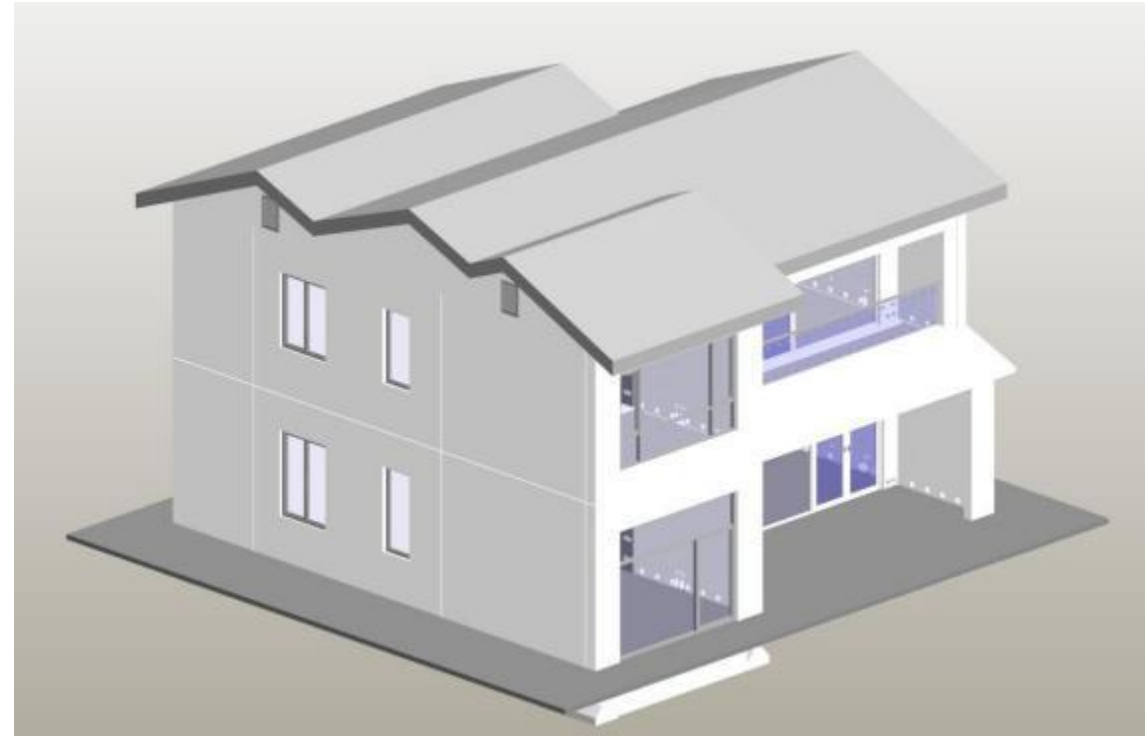
**Full precast
concrete wall**

**Insulation
integration**

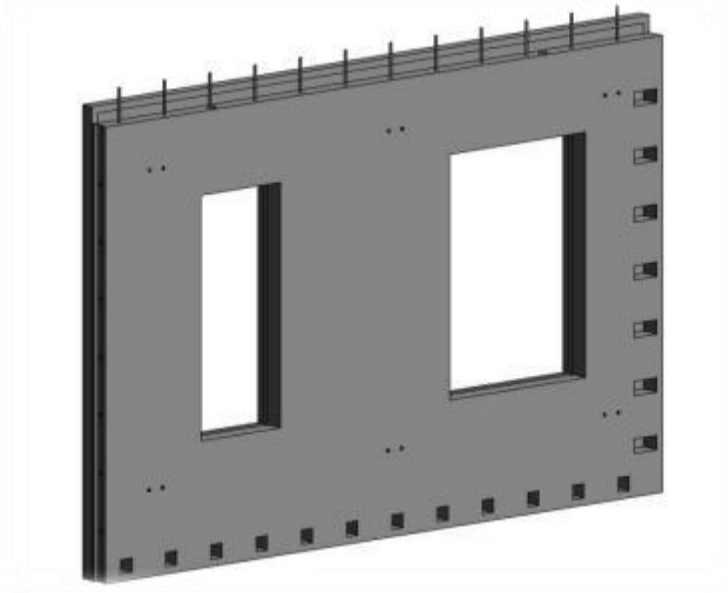
**Full prefabricated,
floor**

Dry method connection

Light steel roof



Repertoire



- **fully prefabricated wall**

Full wall concrete precast, 0 pouring on site

- **Mechanotronics**

Electromechanical point integrated prefabrication, accurate and efficient

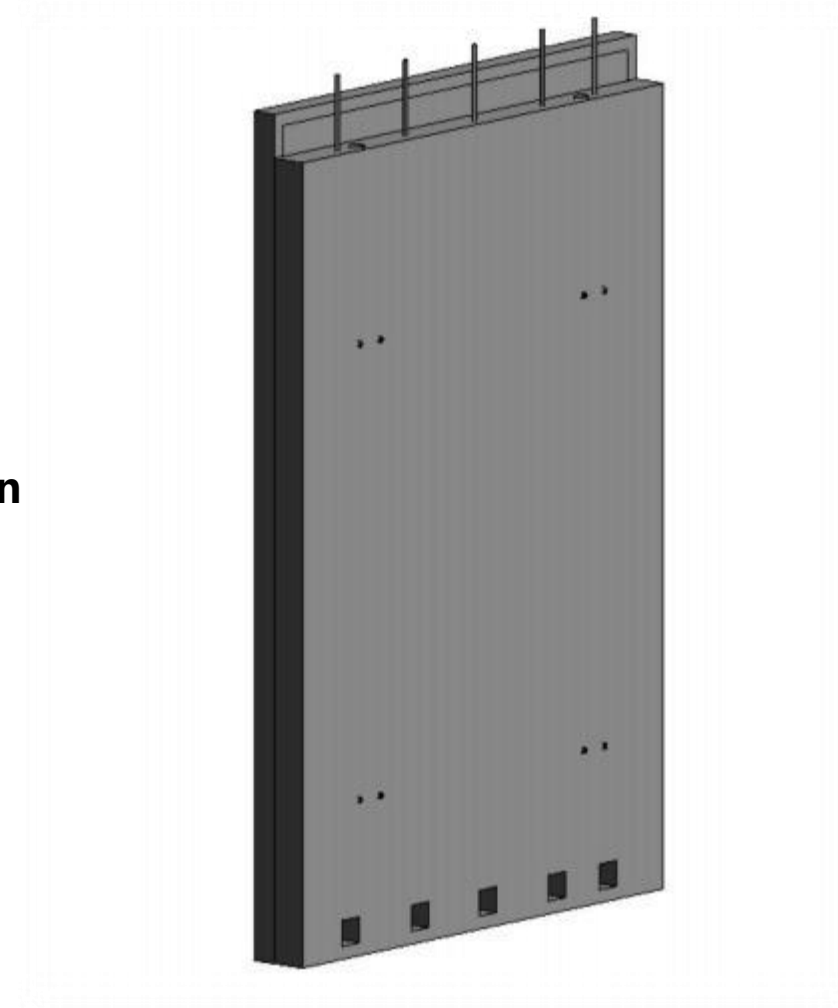
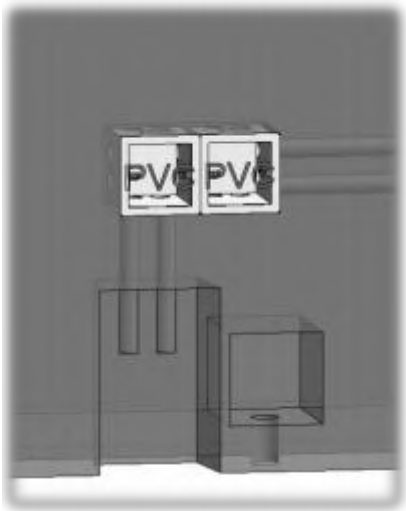
- **Integrated with thermal insulation**

Thermal insulation and the main body integration, with the same life, fire prevention

Excellent effect

- **Less amount of reinforcement, general mold**

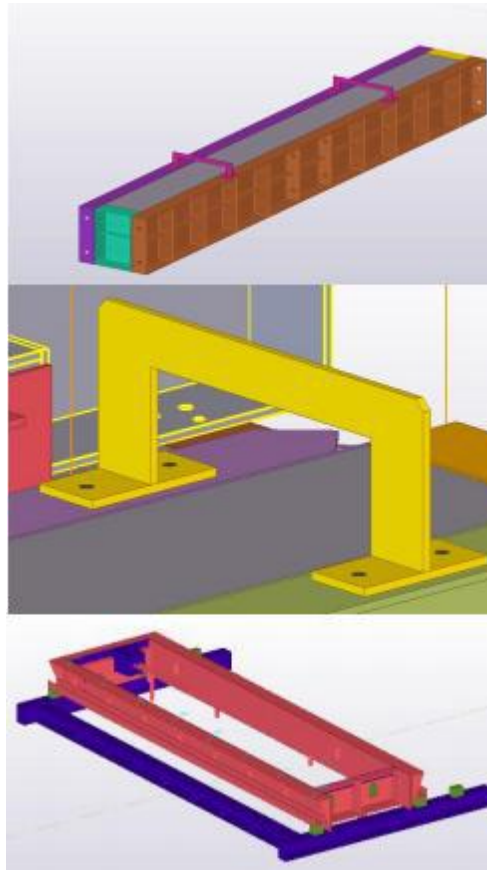
Reduce the manufacturing cost and improve the manufacturing efficiency



Closed loop advantage

The whole industry chain closed loop

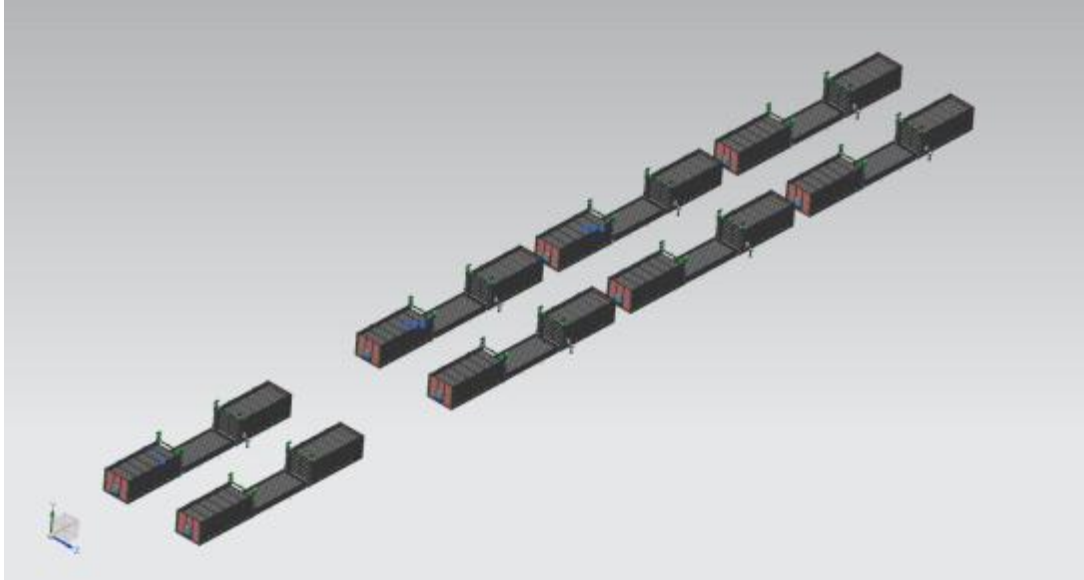
The company's self-system has product solution research and development, construction drawing design, PC deepening, assembly type deepening design and building mold, production line design and production capacity, With two physical engineering and PC production lines, construction and installation team; can realize closed-loop service.



Closed loop advantage

Nominal factory

The company solves the long-distance transportation problem of PC components. Intensive production equipment is modular design, can be moved to the site and other places in need of nearby production, Reduce transportation costs. Mobile PC nomadic production line, can closely follow the project, flexible migration. High quality: mechanized production, automatic control, improve the reliability of equipment and reduce the difficulty of operation and maintenance.



Production of intelligent manufacturing



Production of intelligent manufacturing



Production of intelligent manufacturing



field installation



field installation



urban renewal



urban renewal-Municipal construction



urban renewal-Garbage classification



mobile cabin hospital



武汉火神山医院



南京汤山医院



扬中方舱



上海方舱医院



京沪高铁镇江南站
出站口临时用房



江苏省防疫检测用房



镇江国防园
检疫观察隔离区



镇江方舱医院
(镇江高等专科学校隔离点)



镇江市第一人民医院
发热门诊防疫用房



交通局高速路口
防疫检疫通道



江苏省核酸采集舱



镇江市第一人民医院
新区(大港)分院门诊隔离房



镇江市中医院
发热门诊



京沪高铁镇江南站
防疫通道

蓝房
抗疫
先锋

mobile cabin hospital



Container commercial street



Villa exitport



rural revitalization



Cultural tourism health care



Cultural tourism health care



the same style of Elon Reeve Musk



Office building



project department



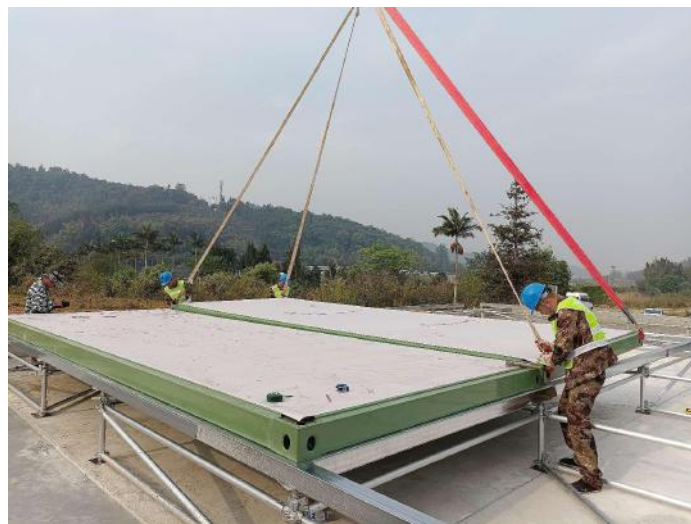
project department



student dormitory



Military projects



32 listed companies cooperating 12 Central Enterprises Cooperate





THANK YOU

Tel: +8618205049903(Whatsapp)

WEB: www.lanquanbuild.com

Email:

jane@jslanquan.com/sales@jslanquan.com