

# 2024 产品宣传画册

PRODUCT BROCHURE



镁质材料系列、装配式房屋系列  
(内外墙、屋顶、地面材料及模块化房屋)、  
新型建材系列(混凝土、混凝土外加剂、砂浆、PC)  
Magnesium material series, prefabricated housing series  
(interior and exterior walls, roofs, floor materials and modular houses),  
New building materials series (concrete, mixed soil admixtures, mortar, PC prefabricated components)

邮箱: sales@jslanquan.com

网址: www.jslanquan.com

地址: 江苏省镇江市丹徒区谷阳东大道100号

Email: sales@jslanquan.com

Website: www.jslanquan.com

Add: No. 100, Guyang East Avenue, Dantu District, Zhenjiang City, Jiangsu Province

Tel: +8618205049903 (Whatsapp)

WEB: www.lanquanbuild.com

Email: jane@jslanquan.com/sales@jslanquan.com

江苏蓝圈新材料股份有限公司  
JIANG SU LAN QUAN NEW MATERIAL CO.,LTD







# 百瑞吉-功能性纤维素

## BRJ – FUNCTIONAL CELLULOSE

### 石膏系统 GYPSUM SYSTEM

- ◆ 纤维素用于石膏基产品中，可以使石膏产品具有更高的施工效率，节约时间和减少成本。
- ◆ 提高石膏产品性能。
- ◆ 生产个性化需求的石膏产品。
- ◆ Cellulose used in gypsum based products can make gypsum products have,Higher construction efficiency,saving time and reducing costs.
- ◆ Improve gypsum product performance.
- ◆ To produce gypsum products for individual needs.

石膏砂浆 gypsum mortar	添加量 addition	主要特性 Main characteristics
粉刷石膏 Paint gypsum	0.03%-0.15%	良好的操作性,优异的浆体稳定性,减少分分泌水 Good operability, excellent slurry stability, reduce stratified bleeding
石膏腻子 Gypsum putty	0.03%-0.15%	良好的操作性,改善基面的润湿能力 good operability, improve the base surface wetting ability
机喷石膏 Machine spray gypsum	0.03%-0.15%	增加可泵送性,降低劳动强度,抗流挂,降低干燥开裂 increase pumpability, reduce labor intensity, Anti-current hanging, reduce dry cracking

### 砌筑抹灰系统 MASONRY PLASTERING SYSTEM

- BRJ纤维素用于高品质的干混砂浆中，可以使砂浆。
- ◆ 提高的施工效率。
- ◆ 节约时间，金钱和原料。
- ◆ 满足高品质的标准要求。
- BRJ cellulose is used in high quality dry mix mortars and can make mortars.
- ◆ Improved construction efficiency.
- ◆ Save time, money and materials.
- ◆ Meet the requirements of high quality standards.

抹灰和砌筑砂浆 plastering and masonry mortar	添加量 addition	主要特性 Main characteristics
砌筑砂浆 Masonry mortar	0.03%-0.15%	良好的塑形性,优异的粘结性,减少落地灰 good shape, excellent adhesion, reduce falling ash
抹灰砂浆 Plaster mortar	0.03%-0.15%	良好的操作性,良好的抗流挂性 good operability, good resistance to flow hanging
机喷抹灰砂浆 Machine spray plastering mortar	0.03%-0.15%	良好的操作性,较高的浆体稳定性,不空鼓,抗流挂性 good operability, high slurry stability, no empty drum, anti-hanging

### 自流平砂浆系统 SELF-LEVELING MORTAR SYSTEM

- BRJ纤维素用于自流平砂浆中具有高效保水功能，可以使砂浆。
- ◆ 防止浆料沉淀，泌水。
- ◆ 浆料的流动效果，便于施工。
- ◆ 浆料流平后的表面效果更好，降低砂浆收缩，避免发生裂纹。
- BRJ cellulose used in self-leveling mortar has an efficient water retention function, which can make the mortar.
- ◆ Prevent slurry precipitation and bleeding.
- ◆ Slurry flow effect, easy to construction.
- ◆ The surface effect of the slurry leveling is better, reducing the shrinkage of the mortar and avoiding cracks.

自流平砂浆系统 self-leveling mortar system	添加量 addition	主要特性 Main characteristics
薄层水泥基自流平砂浆 Thin layer of cement base Self-leveling mortar	0.1%-0.3%	较好的流平性,抗离析,优越的拉伸粘结强度和抗压强度,优异的耐磨性 good leveling, anti-segregation, superior tensile bond strength and Compressive strength, excellent wear resistance
石膏基厚层自流平砂浆 Gypsum base thick layer Self-leveling mortar	0.1%-0.3%	较好的流平性,高分散性,优异的流动性,优异的耐磨性 good leveling, high dispersion, excellent fluidity, Excellent wear resistance

### 瓷砖粘结剂 CERAMIC TILE BINDER

- BRJ纤维素在瓷砖粘结剂中，可以使砂浆。
- ◆ 提高产品的保水性。
- ◆ 延长校正时间和开放时间。
- ◆ 能够减少结膜，滑移和下垂。
- BRJ cellulose in tile binder can make mortar.
- ◆ Improve product water retention.
- ◆ Extend calibration time and opening time.
- ◆ Can reduce conjunctiva, slip and sag.

瓷砖粘结剂 ceramic tile binder	添加量 addition	主要特性 main characteristics
普通型瓷砖粘结剂 Ordinary ceramic tile binder	0.2%-0.3%	出色的操作性,良好的耐热性,较高的强度 excellent operability, good heat resistance, high strength
标准型瓷砖粘结剂 C1/C1TStandard ceramic tile binderC1/C1T	0.3%-0.4%	较长的开放时间,优异的耐热性,良好的抗滑移性,优秀的施工性 Long opening time, excellent heat resistance, good slip resistance, Excellent construction
优质型瓷砖粘结剂 C2/C2THigh quality ceramic tile binder C2/C2T	0.35%-0.50%	增加可泵送性,降低劳动强度,抗流挂,降低干燥开裂 Increase pumpability, reduce labor intensity, Anti-current hanging, reduce dry cracking

### 瓷砖勾缝剂 CERAMIC TILE STITCHING AGENT

- 勾缝剂用于填充瓷砖缝隙，起粘结的防渗作用，BRJ纤维素能够使勾缝剂具有。
- ◆ 良好的粘合性。
- ◆ 良好的抗渗性能。
- ◆ 低收缩率。
- ◆ 施工性优良。
- The caulking agent is used to fill the crevices of ceramic tiles and plays the anti-seepage role of bonding. BRJ cellulose can make the caulking agent have.
- ◆ Good adhesion.
- ◆ Good impermeability.
- ◆ Low shrinkage.
- ◆ Excellent construction.

瓷砖勾缝剂 ceramic tile jointing agent	添加量 addition	主要特性 Main characteristics
勾缝剂 Pointing agent	0.06%-0.08%	施工性,低收缩率,粘结性,抗霉变 workability, low shrinkage, adhesion, anti-mildew

### 腻子 PUTTY

- 腻子的配方需要添加纤维素来提高施工性和一些力学性能，BRJ纤维素能够显著的实现这些目标。
- ◆ 防止浆料沉淀，泌水。
- ◆ 浆料的流动效果，便于施工。
- ◆ 优异的耐高温性。
- ◆ 抗开裂、提高强度。
- The putty formula requires the addition of cellulose to improve the constructability and some mechanical properties, and BRJ cellulose can significantly achieve these goals.
- ◆ Prevent slurry precipitation and bleeding.
- ◆ Slurry flow effect, easy to construction.
- ◆ Excellent high temperature resistance.
- ◆ Anti-cracking, improve strength.

腻子 putty	添加量 addition	主要特性 main characteristics
普通腻子 Ordinary putty	0.3%-0.5%	良好的和易性,优异的施工性 good workability, excellent constructability
耐高温型腻子 High temperature resistant putty	0.3%-0.5%	优异的耐高温性能,良好的操作性 excellent high temperature resistance, good operability
超薄型腻子 Ultra-thin putty	0.3%-0.5%	高保水,塑形效果好,易施工 high water retention, good molding effect, easy construction

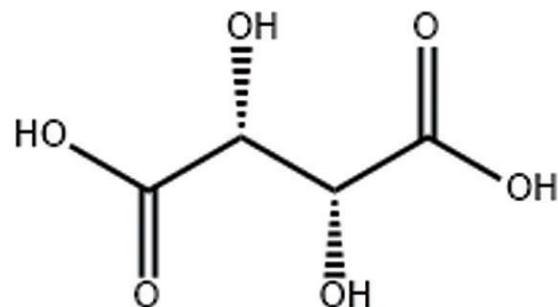


# L(+)-酒石酸

L(+)-TARTARIC ACID

CAS NO: 87-69-4

分子式 FORMULA: C<sub>4</sub>H<sub>6</sub>O<sub>6</sub>



应用类别及登记证号	功能和用途	执行标准
食品添加剂	在食品中作为酸度调节剂使用，用于油炸面制品、固体复合调味料、植物蛋白饮料、复合蛋白饮料、碳酸饮料、茶、咖啡、植物(类)饮料、特殊用途饮料、风味饮料、葡萄酒、糖果等。	GB 25545-2010,同时满足FCC、USP、EP、BP、日本食品添加剂公定书、E334 等国际标准的有关指标。
药用辅料 CDE 登记号:F20200000354	药用辅料,PH调节剂和泡腾剂等。	《中国药典》2020 年版四部
工业原料	用在自流平水泥、石膏行业中作为缓凝剂使用;亦可用作媒染剂、鞣剂等。	企业标准或定制

Application Category &Registration Number	Function And Purpose	Implementation Standards
Food Additives	Used in foods as an acidity regulator,used for fried flour products, solid compound seasonings,vegetable protein drinks,compound protein drinks,carbonated drinks,tea,coffee,vegetable drinks, special purpose drinks, flavored drinks,wine,candies,etc.	GB 25544-2010,also meets the international standards of FCC、USP、EP、BP、JSFA、E334, ect.
Pharmaceutical Excipients CDE NO:F20200000354	Pharmaceutical excipients, pH regulator and effervescent agent,etc.	Chinese Pharmacopoeia, 2020 edition of four
Industrial Raw Materials	Used in self leveling cement and gypsum industry as a retarding agent;Used as mordant, tanning agent, etc.	Enterprise standard or customization.

	食品添加剂	药用辅料	工业原料
	Food Additives	Pharmaceutical Excipients	Industrial Raw Materials
产品展示 Product Display			
包装	25Kg复合纸袋内衬聚乙烯袋包装, 20' 集装箱打托可装20吨。	25Kg/袋, 药用低密度聚乙烯袋包装。	25KG 复合纸袋内聚乙烯袋包装或根据客户要求。
Packaging	25kg net in kraft /plastic bag lined with PE bag, 20MT/20FCL(on pallet).	25kg net in medical use low density polyeth-ylene bag,	25kg net in kraft/plastic bag lined with PE bag orin accordance with customer's requirements
储存	贮存于常温、干燥的库房内。防潮、防日晒、防雨淋防止与有害有毒物质混存。	遮光，密封保存	贮存于常温、干燥的库房内。防潮、防日晒、防雨淋防止与有害物质混存。
Storage	Stored in dry warehousewith room temperatureKeep away frommoisture.direct sunlight andrain,and preventmixing with toxicand harmful substances.	Keep airtight and away from direct sunlight.	Stored in dry warehouse with room temperature. Keep away from moisture.direct sunlight andrain,and prevent mixingwith toxic and harmfulsubstances.